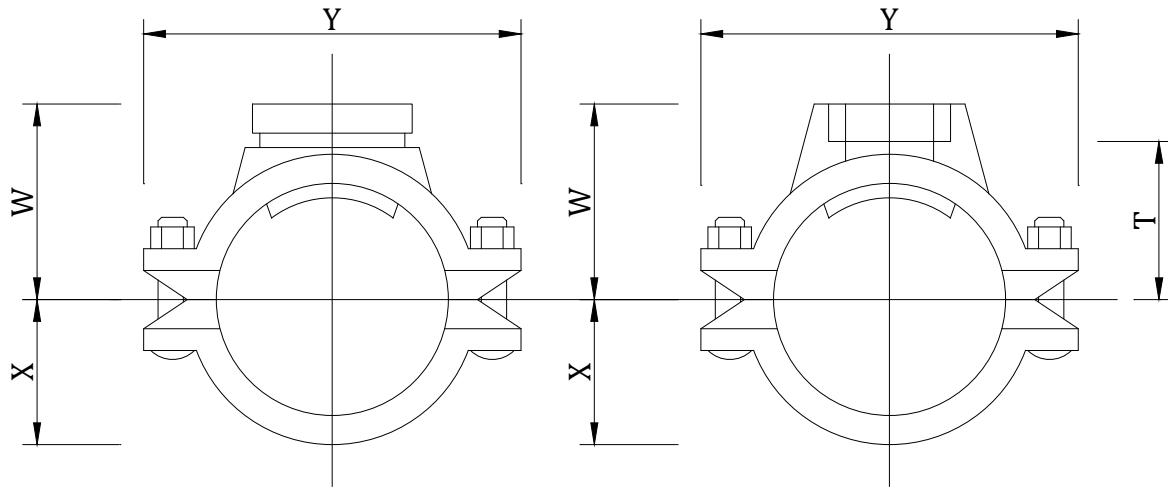


GROOVED MECHANICAL TEES



VICTAULIC GROOVED OUTLET

BSP THREADED OUTLET

NOMINAL SIZE		PIPE OUTSIDE DIAMETER		BRANCH	MECHANICAL TEE DIMENTIONS			
MAIN	BRANCH	MAIN	BRANCH	TYPE	W	X	Y	T
65	40	73 & 76.1	48.3	THREAD 1.5 BSP	80	45	145	60
80	32	88.9	42.4	THREAD 1.5 BSP	86	54	159	68
80	40	88.9	48.3	GROOVE	86	54	159	
80	40	88.9	48.3	THREAD 1.5 BSP	86	54	159	68
80	50	88.9	60.3	THREAD 2 BSP	89	53	160	64
100	32	114.3	42.4	THREAD 1.25 BSP	102	67	184	84
100	40	114.3	48.3	GROOVE	102	67	184	
100	40	114.3	48.3	THREAD 1.5 BSP	102	67	184	84
100	50	114.3	60.3	GROOVE	102	67	194	
100	50	114.3	60.3	THREAD 2 BSP	102	65	185	77
100	65	114.3	76.1	GROOVE	100	65	185	
100	65	114.3	76.1	THREAD 2.5 BSP	106	65	185	80
100	80	114.3	88.9	GROOVE	100	65	185	
100	80	114.3	88.9	THREAD 3 BSP	114	67	184	88.9
150	40	165.1	48.3	THREAD 1.5 BSP	130	94	254	113
150	40	168.3	48.3	GROOVE	130	94	254	
150	40	168.3	48.3	THREAD 1.5 BSP	130	94	254	113
150	50	165.1	60.3	GROOVE	130	94	254	
150	50	168.3	60.3	GROOVE	130	94	254	
150	50	165.1&168.3	60.3	THREAD 2 BSP	130	93	250	105
150	65	165.1	76.1	THREAD 2.5 BSP	130	94	254	106
150	65	168.3	76.1	THREAD 2.5 BSP	130	94	254	106
150	80	165.1	88.9	THREAD 3 BSP	140	94	254	114.3
150	80	165.1&168.3	88.9	GROOVE	130	93	250	
150	80	168.3	88.9	THREAD 3 BSP	140	94	254	114.3
150	100	165.1&168.3	114.3	GROOVE	130	93	250	
150	100	168.3	114.3	THREAD 4 BSP	137	94	238	108
200	50	219.1	60.3	THREAD 2 BSP	159	124	318	135
200	65	219.1	76.1	THREAD 2.5 BSP	159	124	318	132
200	80	219.1	88.9	GROOVE	155	117	315	
200	100	219.1	114.3	GROOVE	155	117	315	
200	100	219.1	114.3	THREAD 4 BSP	162	124	318	135

MAX WORKING PRESSURE = 21 BAR

ALL BRANCH THREADS ARE FEMALE BSP PARALLEL TO BS21