

# UNDERSTANDING - PRESSURE AND FLOW

Most people think that the pressure comes from the pump. This is not true. The pump only provides a rate of flow. The flow meets with and overcomes a resistance and result of this is pressure. The pressure gauge is not reading the pressure the pump is providing but the amount of resistance currently being overcome by it.

## LEGEND

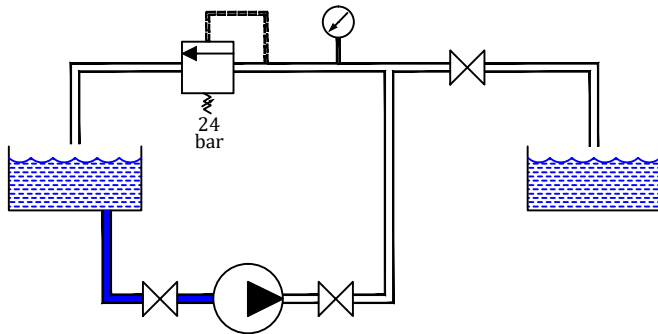
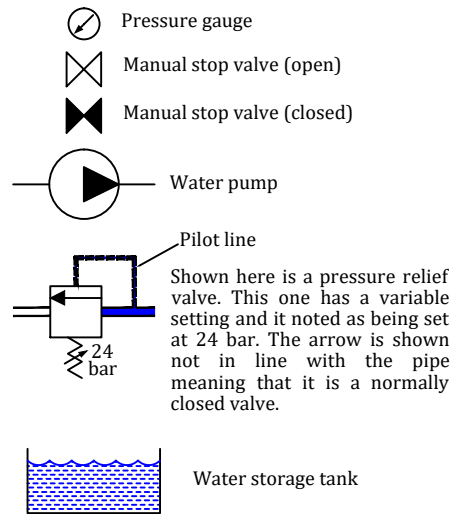


DIAGRAM SHOWN WITH PUMP NOT RUNNING

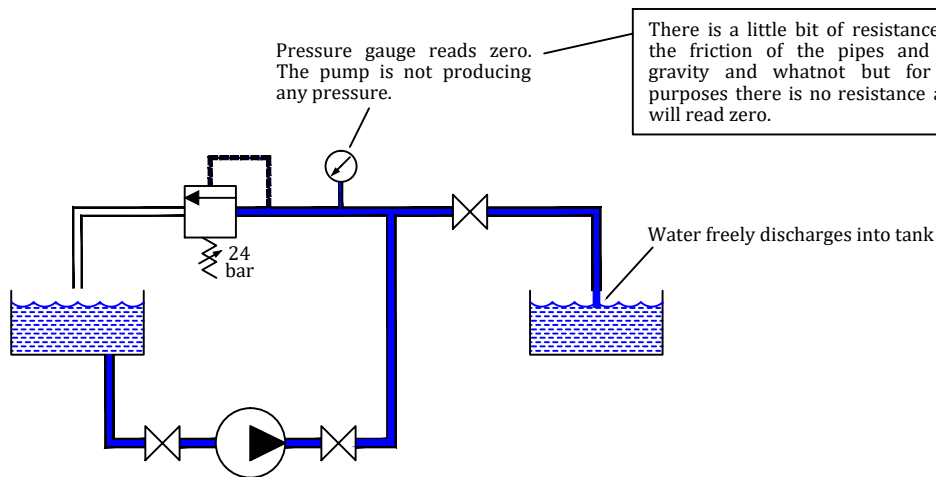


DIAGRAM SHOWN WITH PUMP RUNNING

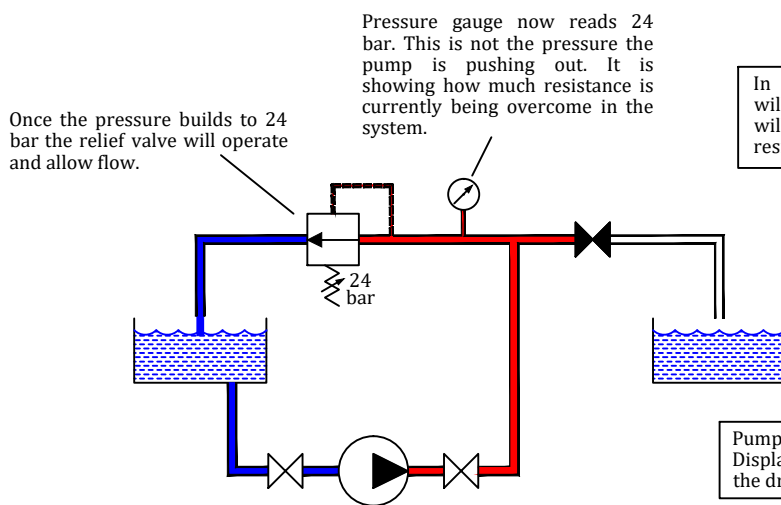


DIAGRAM SHOWN WITH PUMP RUNNING WITH A CLOSED VALVE.